

AppBuilder
By Magic Software Enterprises

Magic Software AppBuilder

Version 3.2

Installation Guide

Corporate Headquarters
Magic Software Enterprises
5 Haplada Street,
Or Yehuda 60218, Israel
Tel +972 3 5389213
Fax +972 3 5389333

© 1992-2013 AppBuilder Solutions

All rights reserved.

Printed in the United States of America.

AppBuilder is a trademark of AppBuilder Solutions. All other product and company names mentioned herein are for identification purposes only and are the property of, and may be trademarks of, their respective owners.

Portions of this product may be covered by U.S. Patent Numbers 5,295,222 and 5,495,610 and various other non-U.S. patents.

The software supplied with this document is the property of AppBuilder Solutions and is furnished under a license agreement. Neither the software nor this document may be copied or transferred by any means, electronic or mechanical, except as provided in the licensing agreement.

AppBuilder Solutions has made every effort to ensure that the information contained in this document is accurate; however, there are no representations or warranties regarding this information, including warranties of merchantability or fitness for a particular purpose. AppBuilder Solutions assumes no responsibility for errors or omissions that may occur in this document.

The information in this document is subject to change without prior notice and does not represent a commitment by AppBuilder Solutions or its representatives.

1. Installation Guide	2
1.1 Before You Install	2
1.2 Installing AppBuilder 3.2	4
1.2.1 Continuing the Base Installation	4
1.2.2 Configuring the Installation	8
1.2.3 Modifying, Repairing, or Uninstalling	9
1.2.4 Viewing Product Information	12
1.2.5 Performing a Silent Installation	13

Installation Guide

Before You Install

Before You Install

This guide explains how to install AppBuilder 3.2 in Windows® environment. Before installing this software, please read the product Release Notes available on the first page of the installation wizard. This guide covers the following aspects of a full AppBuilder 3.2 installation:

- [Minimum Hardware Requirements for Installation](#)
- [Installing AppBuilder 3.2](#)
- [Performing a Silent Installation](#)
- [Viewing Product Information](#)
- [Modifying, Repairing, or Uninstalling](#)

System Requirements

This section covers the following topics:

- [Minimum Hardware Requirements for Installation](#)
- [Software Requirements](#)

The software requirements include the following aspects:

- [Java Requirements](#)
- [WebSphere Development Requirements](#)
- [WebLogic Development Requirements](#)
- [Apache Tomcat Development Requirements](#)
- [Network Protocols for Workgroup Repository](#)

Minimum Hardware Requirements

The following table outlines the hardware requirements recommended for installing AppBuilder 3.2:

Table 1-1 AppBuilder Construction Workbench Hardware Requirements

Hardware	Recommendations
CPU	Pentium IV, 1.5 GHz minimum
Memory	1.5 GB RAM minimum, 2 GB Recommended
Disk space	<ul style="list-style-type: none">• 2 GB minimum• Workgroup Repository - 1 GB minimum• Departmental Server - 500 MB minimum• Gateway Server - 250 MB Note: Repository Disk space requirements vary depending on the size of the user's application. This also applies to development computers that build the application.
Network adapter (Communications)	Ethernet
Display	1024 x 768 minimum resolution
Keyboard	Any
Mouse	Any

Note	The requirements provided in this document are for AppBuilder software only. Refer to vendor documentation for details about any additional requirements for application servers and third-party software. When picking a computer, consider the resources used by other software on that computer. For example, if you install development environment software on a computer that also functions as a Web server, make sure that resources are available for both.
-------------	--

Software Requirements

This section provides an overview rather than a comprehensive list of requirements. For a complete list of supported third-party requirements for this release of AppBuilder for Windows environment, refer to AppBuilder Support Web site at <http://support.appbuilder.com>. AppBuilder uses several other applications. The way in which you plan to use AppBuilder dictates what should also be installed. In general, however:

Table 1-2 Third-Party Requirements

To do this	Install this
Use AppBuilder	A database engine (Microsoft SQL Server 2005 or later, or IBM DB2) to function as a repository (Personal Repository or Workgroup Repository).
Use AppBuilder to build and deploy C (Windows) applications	A supported C compiler.
Use AppBuilder to build and deploy C# applications	A supported Microsoft Visual C# or Microsoft Visual Studio compiler as well as Visual Studio.NET Full Edition or Express Edition.
Use AppBuilder to build and deploy Java applications	A supported Java compiler and installed JDK.
Use AppBuilder to build and deploy web-enabled applications	A supported web service.

Personal Repositories are installed on a client computer; Workgroup Repositories are installed on a network server and accessed by multiple clients. The compilers and web servers must be installed on each client using AppBuilder.

If further assistance is required, or for the latest documentation and updates for AppBuilder, contact AppBuilder Customer Support or visit AppBuilder Support web site at <http://support.appbuilder.com>.

Java Requirements

The AppBuilder documentation site provides [Third Party Matrix](#). For specific AppBuilder components, in addition to the items listed here, Java development also requires:

- Sun's Java version 1.5 or 1.6.
- For invoking or deploying Web Services, if the application server does not supply a SAX-based Java parser as part of their execution environment, use the Apache XML parser for Java, Xerces version 1.4 or higher.
- For the Report Writer, use Java runtime environment Standard Edition.
- RuleView is based on the Java Platform Debugger Architecture (JPDA) from Sun and is included in the Java Development Kit. If you encounter the "JPDA is required to run RuleView." error message while opening RuleView, add `< directory in which Java is installed >.lib\tools.jar` to your CLASSPATH environment variable.
- AppBuilder allows the PATH environment variable to pick the java compiler. For AppBuilder to work properly, the appropriate version of javac.exe must be found first in the path. It is recommended that the JDK's or JRE's "bin" directory be the first item in your PATH environment variable.

WebSphere Development Requirements

In addition to the items listed in the *Third-Party Support Matrix*, the following items are required for Java development for WebSphere application servers:

- For Open Generation, HTML Client, and EJB, use IBM Websphere or Java Standard Edition with J2EE Reference Implementation, an HTML editor, and Internet Explorer 6.0 SP1 or SP2.
- For invoking or deploying Web Services, if the application server does not supply a SAX-based Java parser as part of their execution environment, use the Apache XML parser for Java, Xerces version 1.4 or higher.

WebLogic Development Requirements

In addition to the items listed in the *Third-Party Support Matrix* available on the Customer Support web site, the following items are also required for Java development on WebLogic application servers:

- For Open Generation, HTML Client, and EJB, use BEA WebLogic or Java Standard Edition with J2EE Reference Implementation, any HTML editor, and the Internet Explorer 6.0 SP1 or SP2 browser.
- For HTML Client and SOAP Web Services, use BEA WebLogic, and Internet Explorer 6.0 SP1 or SP2.
- For invoking or deploying Web Services, if the application server does not supply a SAX-based Java parser as part of their execution

environment, use the Apache XML parser for Java, Xerces version 1.4 or higher.

Apache Tomcat Development Requirements

In addition to the items listed in the *Third-Party Support Matrix* available on the Customer Support web site, the following items are required for Java development on Web servers that support Apache with Tomcat:

- For Open Generation, use Apache with Tomcat Release supporting Java Servlet 2.2 and above or Java Standard Edition with J2EE Reference Implementation, any HTML editor, and Internet Explorer 6.0 SP1 or SP2.
- For EJB, HTML Client, and SOAP Web Services, use Apache with Tomcat Release supporting Java Servlet 2.2 and above and the Internet Explorer 6.0 SP1 or SP2.

Network Protocols for Workgroup Repository

AppBuilder supports the Microsoft Windows Server 2003 and Microsoft Windows Server 2003 R2 implementation of the named pipes protocol, which provides communication support for client-server applications. This software provides communications support. The named pipes can be transported on either NetBEUI or TCP/IP (using the TCP/IP NetBIOS Helper Service) protocols.

Installing AppBuilder 3.2

Installing AppBuilder 3.2

You must have the local administrator rights to install, modify, repair, or remove AppBuilder. Before installing AppBuilder, shut down all other programs including antivirus software and spyware removal tools.

There are two ways to install AppBuilder:

- Installing from a CD
- Installing from a self-extracting file

Installing from a CD

To install AppBuilder from CD

1. Insert the AppBuilder Installation CD into the CD-ROM drive.



The AppBuilder autorun utility starts, providing links to the product Setup, Release Notes, and this Installation Guide as well as the complete documentation set in PDF format.

2. To manually start the installation from the CD, do one of the following, and then follow the instructions under [Continuing the Base Installation](#).
 - Open an icon view of the CD and then double-click *Launch.exe*.
 - From the Windows Start menu, click *Run* and type: `<source.exe>\launch.exe`

Installing from a Self-Extracting File

Complete the following steps to install AppBuilder 3.2 from a self-extracting file:

1. Double-click the self-extracting executable (AB3.2n.exe).



The file unzips in your temp directory and you see the *Launch.exe*.

2. Follow the instructions under [Continuing the Base Installation](#).

Continuing the Base Installation

Continuing the Base Installation

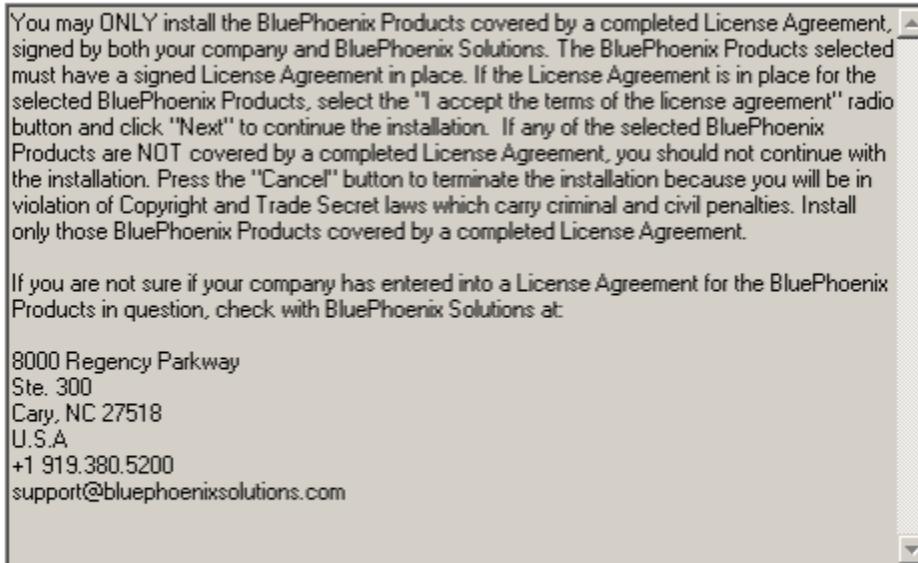
Whether you are installing from the CD or from the self-extracting executable file, follow these steps to continue your base installation of AppBuilder 3.1:

Click Install AppBuilder 3.1 (Click Run, not Save) to run setup.exe.

The Welcome window displays.

From the Welcome window, click Next to display the License Agreement* *window.

AppBuilder License Agreement



I accept the terms of the license agreement

Print

I do not accept the terms of the license agreement

Read the License and Copyright information. You must choose to accept the terms of the license agreement to continue the installation.

The Choose Destination Location window displays.

AppBuilder Destination Location

The setup will install BluePhoenix AppBuilder in the following folder.

To install in this folder, click Next.

To install in a different folder, click Browse and select another folder.

Please note that the installation directory should not contain embedded blanks.

Destination Folder

C:\AppBuilder

Browse...

Click Browse to specify a particular* destination directory or accept the default directory location. The directory name cannot contain embedded spaces. *Click Next to continue.

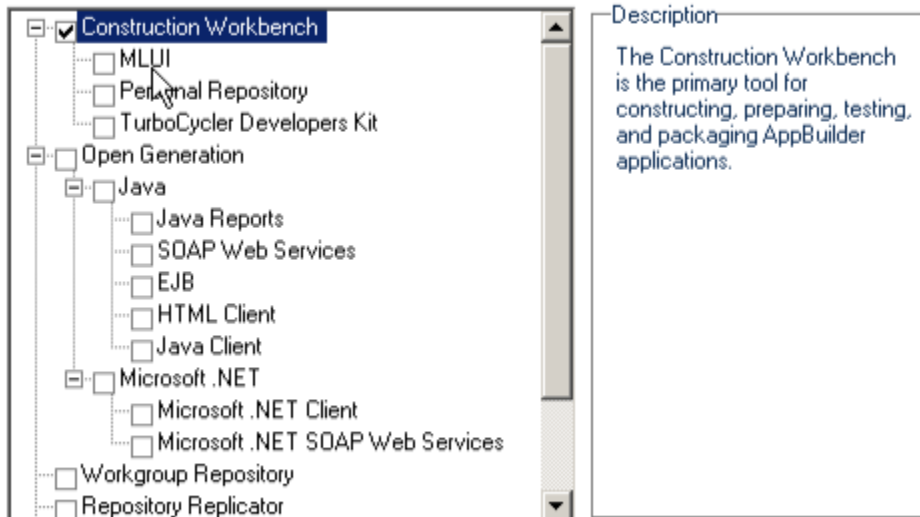
The Select Features window displays.

In the Select Features window, choose all of the product features that you are licensed to install or only those that you would like to install at this time, and click Next .

By default, only Construction Workbench is selected.

AppBuilder Feature Selection window

Select the features you want to install, and deselect the features you do not want to install.



97.92 MB of space required on the C drive
106190.43 MB of space available on the C drive

Two Repository types are available:

- Personal Repository - installs the components required to create local repositories on your computer
- Workgroup Repository - installs the components required to create a Workgroup (shared) repository on your computer

Only one repository type can be installed on a computer. If you select a repository, the previous repository selection is deselected. This AppBuilder installation only delivers the components required to create repositories. Repositories must be created in a separate step after completing installation.

The shortcuts to creating repositories are available under the Repository sub-menu of the AppBuilder program folder.

- To create a Personal Repository, use the Repository Administration link.
- To create a Workgroup Repository, use the Workgroup Repository Setup Wizard link.

Information about creating and configuring repositories is available in the *Repository Administration Guide* (on the CD) and AppBuilder's help (<AppBuilder Program Folder>\Documentation\Help).

Refer to [Installing Preparation and Test Server Features](#) for information about the required configuration options for a Preparation and Test Server installation.

In the Select Program Folder window, choose the program folder name and click Next .

The installation adds program shortcuts.

Select Program Folder window

Setup will add program icons to the Program Folder listed below. You may type a new folder name, or select one from the existing folders list. Click Next to continue.

Program Folder:

AppBuilder

Existing Folders:

- Accessories
- Administrative Tools
- Adobe
- Corel Paint Shop Pro Photo X1
- Debugging Tools for Windows
- Diskeeper Corporation
- EditPad Pro 5
- Games
- Google Desktop
- IBM DB2
- IBM Java Web Start v1.4.2
- iTunes

The Ready to Install window lists the destination directory, the program directory folder name, and the features to be installed.

Ready to Install window

Setup has enough information to start copying the program files. If you want to review or change any settings, click Back. If you are satisfied with the settings, click Next to begin copying files.

Current Settings:

Destination Directory :
C:\AppBuilder

Program Folder :
AppBuilder

Selected Features :
Construction Workbench

Update Environment Variables automatically (Recommended)

An UpdateEnvironment Variables automatically (Recommended) check box is at the bottom of this window. This should be used if previous attempts to install AppBuilder have hung. If you deselect this option, you will need to manually refresh the environment on the computer or restart before AppBuilder functions properly.

Click Install .

The Setup Status window box displays a progress bar, lists files being copied, and displays installation messages.

When the InstallShield Wizard Complete window displays, click Finish. If you are prompted to reboot, click Yes, I want to restart my computer now .

Setup Complete window

InstallShield Wizard Complete

The InstallShield Wizard has successfully installed AppBuilder. Click Finish to exit the wizard.

Setup is now complete.

The AppBuilder Communications are configured to enable TCP/IP protocol and the system default Codepage. Refer to the *Configuring Communications Guide* for more information about settings.

In order to use the Workgroup Repository feature, you must create a Repository. To do this, use the Workgroup Repository Setup Wizard by clicking Start > Programs > AppBuilder > Repository > Workgroup Repository Setup Wizard, and follow the steps provided.

Refer to the *Repository Administration Guide* for more information.

To begin using Construction Workbench, you should create a Personal Repository or configure AppBuilder to use a Workgroup Repository by creating an appropriate Repository Alias.

Refer to the *Repository Administration Guide* for more information.

If you unchecked the option, Update Environment Variables Automatically, you can restart the computer or manually update the environment variables. To manually update the environment variables:

Right-click My Computer and choose Properties .

1. Choose the Advanced tab.
2. Click *Environment Variables* .
3. Click *OK* .

Refer to [Modifying, Repairing, or Uninstalling](#) if you want to change your installation.

Installing Client Runtime Only

You can install the Client Runtime feature on a production computer for performing C Client Server production tasks as well as on a dedicated computer in your development environment.

To perform a Client Runtime only installation, follow the instructions in:

- [Installing from a CD](#)
- [Installing from a Self-Extracting File](#)

When you reach Step 5 in [Continuing the Base Installation](#), choose the option for Client Runtime ONLY.

Installing Preparation and Test Server Features

The Preparation and Test Server enables the Departmental Server to handle preparation requests that are remotely submitted by the Construction Workbench.

A Preparation and Test Server only installation can be performed using the instructions in [Installing from a CD](#) and [Installing from a Self-Extracting File](#).

When you reach Step 5 in [Continuing the Base Installation](#), choose the options for Departmental Server and Preparation and Test Server ONLY.

Configuring the Installation

Configuring the Installation

When the installation is complete, you must configure the communications, management consoles, and repositories that you use with AppBuilder. Normally AppBuilder is configured for TCP/IP and the system Codepage; however if you installed a Departmental Server or need to configure a database for Client Runtime, you should configure these settings by clicking Start > Programs > AppBuilder > Configuration > Communications Setup.

AppBuilder depends upon third-party applications for several key functions. These third party applications should be installed, configured, and tested before starting the Construction Workbench and beginning to develop an application.

For instructions on how to configure communications, specify INI settings, and use the management consoles, refer to the *Communications Guide* and the *INI Settings Reference Guide* .

Magic Software Enterprises provides a test application which can be used to test and verify third-party configuration and communication. For

instructions on how to import this application, test multiple configurations, and test multiple runtime configurations, see the *IVP User Guide* . The AppBuilder installation does not install a repository, whether you picked a Personal or Workgroup Repository during the installation process. The repository creation is a post-install procedure but is required before you can start the Construction Workbench and begin working. For instructions on how to install and configure a Personal or Workgroup Repository, refer to the *Repository Administration Guide for Workgroup and Personal Repositories* .

Configuring a Preparation and Test Server

AppBuilder 3.1 requires a C++ compiler on a Preparation and Test Server computer. If Database Rules and Components attach to a Server Partition, perform the following:

- Create a Machine object on the Construction Workbench client computer by choosing Tools > Workbench Options, Prepare > Remote Preparation.

Remote preparation uses the database user ID and password specified by the Construction Workbench. These settings can be configured in your Construction Workbench as follows:

1. Choose **Tools > Workbench Options**.
2. From the hierarchy on the left, choose **Prepare > Remote Preparation**.
3. For each Machine Object, specify a database user ID and password.

If a user ID and password are not provided for a computer, the Preparation and Test Server uses the credentials of the Windows user currently logged in to the Preparation and Test Server computer to authenticate.

Preparation and Test servers require the AppBuilder System Service to be running. By default, the AppBuilder System Service is installed with the Manual startup option.

To start this service, use any of the following four methods:

- Click Start > All Programs > AppBuilder > Configuration > Management Console.
- Click Start > All Programs > AppBuilder > Configuration > Service Console.
- At the command prompt, type `absystemservice -start` , and press ENTER.
- Start the service via the Windows Services Snapin by clicking Administrative Tools > Services, then start AppBuilder System Service.

To make the AppBuilder System Service start automatically every time you start your computer, change the startup option to Automatic.

Modifying, Repairing, or Uninstalling

Modifying, Repairing, or Uninstalling

When you modify, repair, or uninstall AppBuilder, the installation attempts to stop or close all AppBuilder applications and services. However, to avoid losing data, stop or close them *before* modifying, repairing, or uninstalling AppBuilder. To do this, stop the AppBuilder System Service using either Windows Services snap-in or Repository Administration. See the *Repository Administration Guide for Workgroup and Personal Repositories* for more information.

To modify or repair AppBuilder

1. Choose **Start > Settings > Control Panel** .
2. Click **Add or Remove Programs** .
3. From the **Currently installed programs** list, select **Magic Software AppBuilder 3.2.0**, and then click **Change** .

The Magic Software AppBuilder Setup wizard starts.

The wizard **Welcome** page is as following:

Welcome to the AppBuilder Setup Maintenance program. This program lets you modify the current installation. Click one of the options below.

Modify



Select new program features to add or select currently installed features to remove.

Repair



Reinstall all program features installed by the previous setup.

Remove



Remove all installed features.

This section discusses the following topics:

- [Modifying the Installation](#)
- [Repairing the Installation](#)
- [Uninstalling the Application](#)

Modifying the Installation

The Magic Software AppBuilder Setup wizard lets you repair, modify or uninstall AppBuilder.

To modify the current installation

1. On the **Welcome** page, select **Modify** and click **Next**.
A checklist of product features currently installed on your system displays.

Example Setup Checklist

In the options list, select the items you want to install, clear the items you want to remove. All selected products will be returned to the AppBuilder 3.1.0 base level.

	Description
<input checked="" type="checkbox"/> Construction Workbench	
<input type="checkbox"/> MLUI	
<input type="checkbox"/> Personal Repository	
<input type="checkbox"/> TurboCycler Developers Kit	
<input checked="" type="checkbox"/> Open Generation	
<input checked="" type="checkbox"/> Java	
<input checked="" type="checkbox"/> Java Reports	
<input checked="" type="checkbox"/> SOAP Web Services	
<input checked="" type="checkbox"/> EJB	
<input checked="" type="checkbox"/> HTML Client	
<input checked="" type="checkbox"/> Java Client	
<input checked="" type="checkbox"/> Microsoft .NET	
<input checked="" type="checkbox"/> Microsoft .NET Client	
<input checked="" type="checkbox"/> Microsoft .NET SOAP Web Services	
<input type="checkbox"/> Workgroup Repository	
<input type="checkbox"/> Repository Replicator	

AppBuilder's Open Generation facility creates readable, maintainable third-generation language source code from AppBuilder program specifications.

8.60 MB of space required on the C drive

105871.28 MB of space available on the C drive

1. Select check boxes next to any new features that you want to install, and clear the check boxes for any installed features that you want to remove, and then click **Next**.



The required size that displays does not consider removed files. For example, if you clear the check box for a feature that requires 50Mb of space and check one that requires 30Mb of space, the setup reports that you need 30Mb of space.

2. Click **Next** in the **Start Copying Files** window that opens.
This window displays the features that will be removed from and / or added to the AppBuilder 3.2 installation on this computer.
3. On the **Setup Complete** page, click **Finish** to complete the installation.



If files are locked during the file transfer, the installation gives you the option to restart your computer or wait until later.

#When prompted to restart your computer, click **Yes, I want to restart my computer now**.

When you modify your installation, the AppBuilder Setup performs the following operations:

- Preserves user-created files
- Removes all applied RFXs and EFXs

Repairing the Installation

If you have modified your AppBuilder 3.2 files but want to return to the known configuration, you can repair the installation.



Before repairing your installation, be sure to close or stop all AppBuilder applications.

*To repair your installation

1. On the **Welcome** page, select **Repair** and click **Next**.



The **Start Copying Files** window displays the current settings.

2. Confirm the settings and click **Next**.
The setup reinstalls all AppBuilder program files and verifies that all INI files are correctly populated. User-modified INI file settings are not changed, but comments are lost.
The Setup Status window displays a progress bar, the files being copied, and installation messages. When finished, the InstallShield Wizard Complete page displays.
3. On the Complete page, click **Finish** to complete the installation.



If files are locked during the file transfer, the installation gives you the option to restart your computer or wait until later.

#When prompted to restart your computer, click **Yes, I want to restart my computer now**.

When you repair your installation, the AppBuilder Setup performs the following operations:

- Preserves user-created files
- Removes all applied RFXs and EFXs

Uninstalling the Application

AppBuilder can be completely uninstalled from a computer. Before uninstalling the product, be sure to close or stop all AppBuilder applications. Before you uninstall AppBuilder, archive Personal and Workgroup Repositories and then remove them using the Repository Administration Tool. See the *Repository Administration Guide for Workgroup and Personal Repositories* for more information. If you do not remove them using the Repository Administration Tool before uninstalling, the Personal Repository databases remain in the database management system, and you should remove them using a DBMS tool. Use the Repository Administration Tool to archive Workgroup Repositories, and then use the Workgroup Repository Setup Wizard to remove the databases. You should remove a Workgroup Repository before uninstalling. The AppBuilder setup does not remove the Workgroup Repository database.

To remove your installation

1. On the **Welcome** page, select **Remove** and click **Next**.
A message displays asking if you want to completely remove the selected application and all its components.

- Click **Yes** to proceed.
- In the window that prompts you to remove AppBuilder initialization files and user created files, select the appropriate check boxes based on your needs.



If you select the first check box and **Do not remove AppBuilder 3.2 Environment Variables**, all files and directories are removed.

If you do not pick the first check box, user created files and directories remain on the computer.

The following is a list of files that can remain on the system, depending on features previously installed:

- <AppBuilder>\ne20tcp\dna.ini
- <AppBuilder>\netetcp\dna.ini
- <AppBuilder>\nt\nete.cfg
- <AppBuilder>\nt\rt\events.bak
- <AppBuilder>\nt\rt\table.bak
- <AppBuilder>\nt\rt\triggers.bak
- <AppBuilder>\nt\rt\script\mflogoff.bak
- <AppBuilder>\nt\rt\script\mflogon.bak
- <AppBuilder>\prepclnt\dna.ini
- <AppBuilder>\dna.ini
- <AppBuilder>\font.bak
- <AppBuilder>\font.ini
- <AppBuilder>\hps.ini
- <AppBuilder>\turbo.ini
- <AppBuilder>\cfgclint\dna.ini
- <AppBuilder>\brkpts.bak
- <AppBuilder>\appbuilder.ini
- <AppBuilder>\appbuildercom.ini

If you choose **Do not remove AppBuilder 3.2 Environment Variables until next reboot / manual environment update**, the AppBuilder Setup removes the AppBuilder environment information from the registry but does not notify the system of an environment change.

The update occurs when you manually update the environment or restart the computer.

- Click **Uninstall**.
The **Setup Status** window displays a progress bar and messages while AppBuilder is removed. When finished, the Setup Complete page opens.
- On the Setup Complete page, click **Finish** to complete the uninstall process.



If files are locked during the file transfer, the installation gives you the option to restart your computer or wait until later.

- When prompted to restart your computer, click **Yes, I want to restart my computer now**.

Viewing Product Information

Viewing Product Information

The product information includes versions of the AppBuilder products you have installed, the dates on which you installed them, and the EFXs, RFXs, and fix packs that have been applied. There are several ways to view this information.

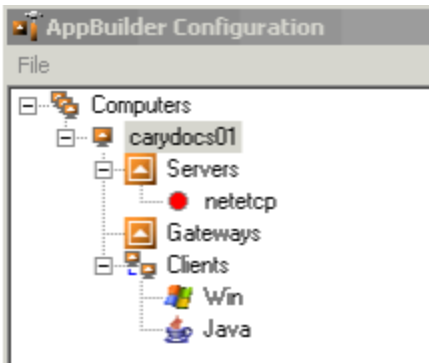
This section discusses the following subjects:

- [Viewing Product Information from the Management Console](#)
- [Viewing Product Information from the Command Line](#)
- [Viewing Product Information from within AppBuilder Tools](#)

Viewing Product Information from the Management Console

To find out detailed information about the AppBuilder 3.2 products and fixes, perform the following steps:

- From the Windows Start menu, choose **All Programs > AppBuilder > Configuration > Management Console**.
If you are required to login, a login screen prompts you to enter Windows login information.
- From the console tree, right-click the computer icon, and then click **View Product Information** on the shortcut menu.



Viewing Product Information from the Command Line

To view a list of installed products, fixes, and fixpacks, type `abprodinfo.exe`. For more information about your AppBuilder 3.2 installation, type `abi.exe` on a command prompt.

Viewing Product Information from within AppBuilder Tools

To view the product information from the Construction Workbench, choose *Help > About Magic Software AppBuilder*.

The **About Magic Software Appbuilder** window lists installed components (under **Products installed**) and RFXs/EFXs (under **Maintenance level**).



Performing a Silent Installation

Performing a Silent Installation

You can run a pre configured AppBuilder installation on multiple computers without using the installation wizard by recording an installation and then running it later on a different computer in silent mode. Silent installations run without any user input.

Recording the Installation

If you use the zip format of the installation, AB3.2n.exe, you should perform the following:

- Extract all files to a directory of your choice.

The setup.exe referenced in [Performing a Silent Installation](#) is available at the root of the extraction directory.

To perform silent installations, you must first record an installation. The settings from the recorded installation can then be used to perform additional silent installations of AppBuilder 3.2. To record an installation:

Open a command prompt to the directory containing the AppBuilder 3.2 setup.exe.

Run setup.exe -r [-f1 <responseFilePath>\setup.iss]

The *-f1* flag is optional. If you do not use it, the setup creates the response file in the Windows directory at %WINDIR%\setup.iss .

While recording an installation, choose the options for the installation the same way you would for a normal base installation.

Performing the Silent Installation

To perform a silent installation, you should access:

- The directory containing setup.exe
- The setup.iss file created while recording an installation

To perform a silent installation:

Open a command prompt to the directory containing setup.exe.

Run setup.exe -s [-f1 <responseFilePath>\setup.iss] [-f2 <logFilePath>\setup.log]

The optional *-f1* flag is only necessary if the setup.iss file does not exist in the same directory as setup.exe or if the filename is not setup.iss. If no flag is set, setup will only look for a file in it's own directory named setup.iss.

The optional *-f2* flag is only necessary if the setup log (setup.log) should not be created in the same directory as the setup.iss file. If the setup.iss file exists in a non-writable directory, a setup log is created unless the *-f2* flag is used to specify a writable location.

If the recorded installation requires a reboot and you choose Restart Now, you are not notified, and the silent installation restarts the computer automatically.

Index